



Trains leave the Montana Historical Society Building at 6<sup>th</sup> and Roberts (225 N. Roberts, Helena, MT 59601) in the Capitol Complex.

## **Tour Train Season Schedule**

Monday – Saturday  
***Closed Sunday***

One Hour Tour

June 1 – June 14  
11am, 3pm

June 15 – June 30  
11am, 1pm, 3pm

Months of July & August  
11am, 1pm,  
3pm, 5:30pm

September 1 – September 15  
11am, 3pm



**406-442-1023**

**[www.lctours.com](http://www.lctours.com)**

• **Helena, Montana** •

# **The Last Chance Tour Train**



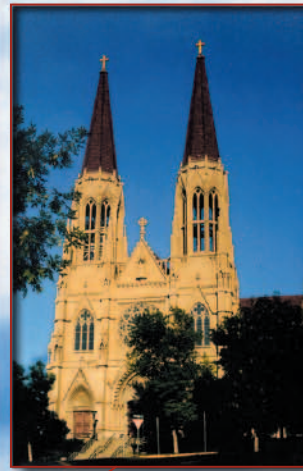
**It's the Fun Way  
To See Beautiful,  
Historic Helena!**



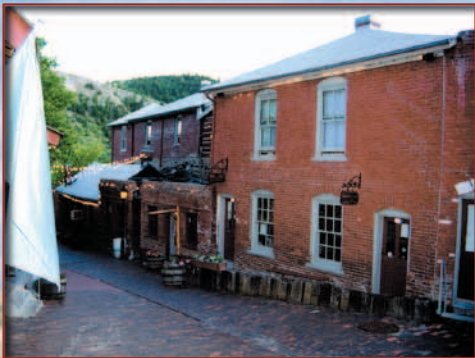


See the opulent mansion district, featuring the dream homes of Helena's mining millionaires.

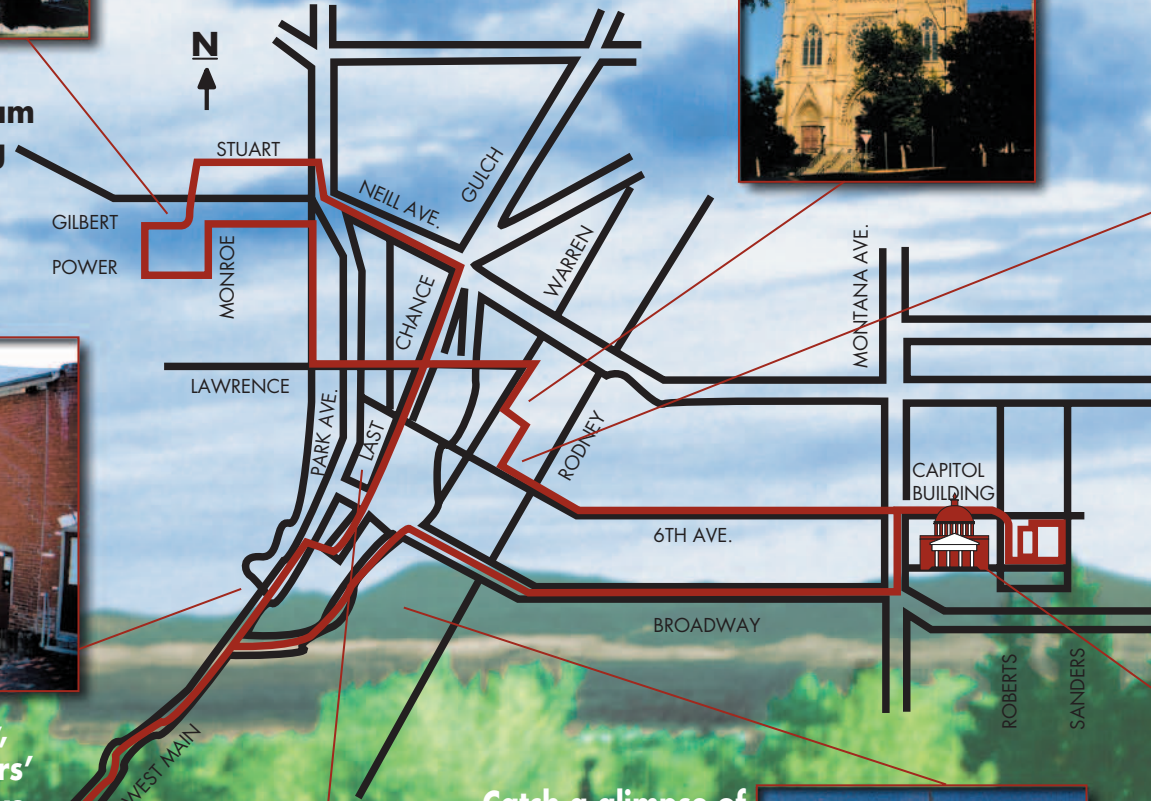
Marvel at St. Helena Cathedral with dramatic 230-foot spires (about 20 stories)



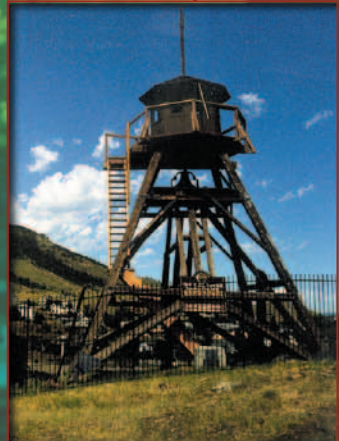
Roll right by our governor's homes, old and new. You'll see the Victorian beauty that served as the home of Montana's governors from 1913 to 1959, as well as the newer home that's the current chief executive's abode.



Cruise by Reeder's Alley, a charming restored miners' village from gold rush days.



Catch a glimpse of The Old Fire Tower. Built in 1876, it's one of the few remaining fire towers you'll see in the United States.



View the Greek Renaissance architecture of Montana's impressive state capitol, constructed of native sandstone and crowned with a massive copper dome.

Enjoy the unique downtown architecture along Last Chance Gulch including buildings embellished with giant lizards, thumbprints and gargoyles.